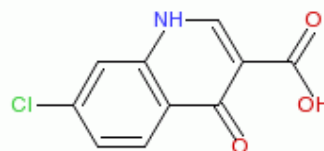


CHLOROQUINE PHOSPHATE



Chloroquine phosphate is in a class of drugs called antimalarials and amebicides. It is used to prevent and treat malaria. It is also used to treat amebiasis.

Chloroquine has a very high volume of distribution, as it diffuses into the body's adipose tissue. Chloroquine and related quinines have been associated with cases of retinal toxicity, particularly when provided at higher doses for longer time frames..

Chemical Formula	: C ₁₈ H ₂₆ ClN ₃
CAS #	: 50-63-5
Molecular Weight	: 319.872 g/mol
Compliance	: IP/BP/USP
Grades	: A white or almost white fine Crystalline powder, odourless
Shelf Life	: 5 years when stored at room temperature in original packing.
Standard Pack Sizes	: 25kgs or 50kgs in HDPE drums, Fiber Board drums or Corrugated boxes.
Regulatory Status	: Manufacturing is performed according to the current good manufacturing practice (cGMP) guidelines

Auro Laboratories Limited.

314, T.V. Industrial Estate, S. K. Ahire Marg, Worli, Mumbai - 400 025. India.

Phone: +91-22-6663 5456(4 Lines) **Fax:** +91-22-6663 5460 **E-mail:** auro@aurolabs.com