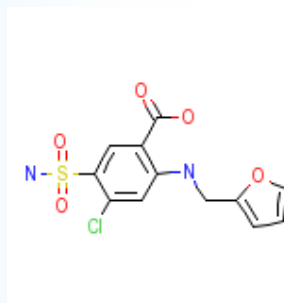


FRUSEMIDE



Furosemide a sulfonamide-type loop diuretic structurally related to bumetanide, is used to manage hypertension and edema associated with congestive heart failure, cirrhosis, and renal disease, including the nephrotic syndrome.

Chemical Formula	: C ₁₂ H ₁₁ ClN ₂ O ₅ S
CAS #	: 54-31-9 FT-207
Molecular Weight	: 330.7 g/mol
Compliance	: IP/BP/USP
Grades	: Micronized powder
Shelf Life	: 5 years when stored at room temperature in original packing.
Standard Pack Sizes	: 25kgs or 50kgs in HDPE drums, Fiber Board drums or Corrugated boxes.
Regulatory Status	: Manufacturing is performed according to the current good manufacturing practice (cGMP) guidelines.

Auro Laboratories Limited.

314, T.V. Industrial Estate, S. K. Ahire Marg, Worli, Mumbai - 400 025. India.

Phone: +91-22-6663 5456(4 Lines) **Fax:** +91-22-6663 5460 **E-mail:** auro@aurolabs.com