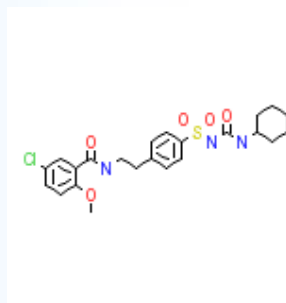


## GLIBENCLAMIDE



**Glibenclamide or Glyburide** a second-generation sulfonylurea antidiabetic agent, appears to lower the blood glucose acutely by stimulating the release of insulin from the pancreas, an effect dependent upon functioning beta cells in the pancreatic islets. With chronic administration in Type II diabetic patients, the blood glucose lowering effect persists despite a gradual decline in the insulin secretory response to the drug. The combination of glyburide and metformin may have a synergistic effect, since both agents act to improve glucose tolerance by different but complementary mechanisms.

|                            |  |
|----------------------------|--|
| <b>Chemical Formula</b>    | : C <sub>23</sub> H <sub>28</sub> CLN <sub>3</sub> O <sub>5</sub> S  |
| <b>CAS #</b>               | : 10238-21-8   |
| <b>Molecular Weight</b>    | : 494.004 g/mol  |
| <b>Compliance</b>          | : IP/BP/USP  |
| <b>Grades</b>              | : White Crystalline Powder   |
| <b>Shelf Life</b>          | : 5 years when stored at room temperature in original packing.   |
| <b>Standard Pack Sizes</b> | : 25kgs or 50kgs in HDPE drums, Fiber Board drums or Corrugated boxes.   |
| <b>Regulatory Status</b>   | : Manufacturing is performed according to the current good manufacturing practice (cGMP) guidelines. DMF in CTD format is under preparation. |

### **Auro Laboratories Limited.**

314, T.V. Industrial Estate, S. K. Ahire Marg, Worli, Mumbai - 400 025. India.

**Phone:** +91-22-6663 5456(4 Lines) **Fax:** +91-22-6663 5460 **E-mail:** auro@aurolabs.com