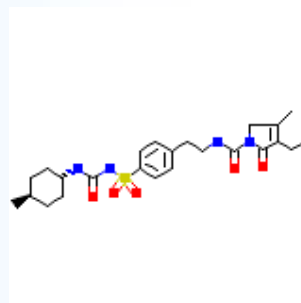


GLIMEPIRIDE



Glimepiride like glyburide and glipizide, is a "second-generation" sulfonylurea agents. Glimepiride is used with diet to lower blood glucose by increasing the secretion of insulin from pancreas and increasing the sensitivity of peripheral tissues to insulin.

Chemical Formula	: C ₂₄ H ₃₄ N ₄ O ₅ S
CAS #	: 93479-97-1
Molecular Weight	: 490.617 g/mol
Compliance	: IP/BP/USP
Grades	: White Crystalline or Powder
Shelf Life	: 5 years when stored at room temperature in original packing.
Standard Pack Sizes	: 25kgs or 50kgs in HDPE drums, Fiber Board drums or Corrugated boxes.
Regulatory Status	: Manufacturing is performed according to the current good manufacturing practice (cGMP) guidelines. DMF in CTD format is under preparation.

Auro Laboratories Limited.

314, T.V. Industrial Estate, S. K. Ahire Marg, Worli, Mumbai - 400 025. India.

Phone: +91-22-6663 5456(4 Lines) **Fax:** +91-22-6663 5460 **E-mail:** auro@aurolabs.com