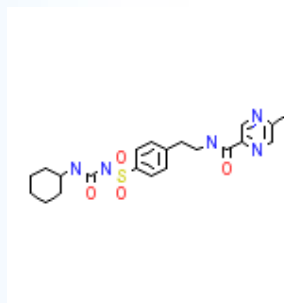


GLIPIZIDE



Glipizide a second-generation sulfonylurea, is used with diet to lower blood glucose in patients with diabetes mellitus type II. The primary mode of action of glipizide in experimental animals appears to be the stimulation of insulin secretion from the beta cells of pancreatic islet tissue and is thus dependent on functioning beta cells in the pancreatic islets. In humans glipizide appears to lower the blood glucose acutely by stimulating the release of insulin from the pancreas, an effect dependent upon functioning beta cells in the pancreatic islets. In man, stimulation of insulin secretion by glipizide in response to a meal is undoubtedly of major importance.

Chemical Formula	: C ₂₁ H ₂₇ N ₅ O ₄ S
CAS #	: 29094-61-9
Molecular Weight	: 444.548 g/mol
Compliance	: IP/BP/USP
Grades	: White Crystalline or Powder
Shelf Life	: 5 years when stored at room temperature in original packing.
Standard Pack Sizes	: 25kgs or 50kgs in HDPE drums, Fiber Board drums or Corrugated boxes.
Regulatory Status	: Manufacturing is performed according to the current good manufacturing practice (cGMP) guidelines. DMF in CTD format is under preparation.

Auro Laboratories Limited.

314, T.V. Industrial Estate, S. K. Ahire Marg, Worli, Mumbai - 400 025. India.

Phone: +91-22-6663 5456(4 Lines) **Fax:** +91-22-6663 5460 **E-mail:** auro@aurolabs.com